

NURSERY

Goal: To create a bright, peaceful, safe, and soft nursery that is full of joy and whimsy where parents feel great about leaving their tiny ones, and that supports nursery volunteers with the tools they need to care for littles. And also to create a designated nursing area for new mothers, where they feel supported and cared for by the church.



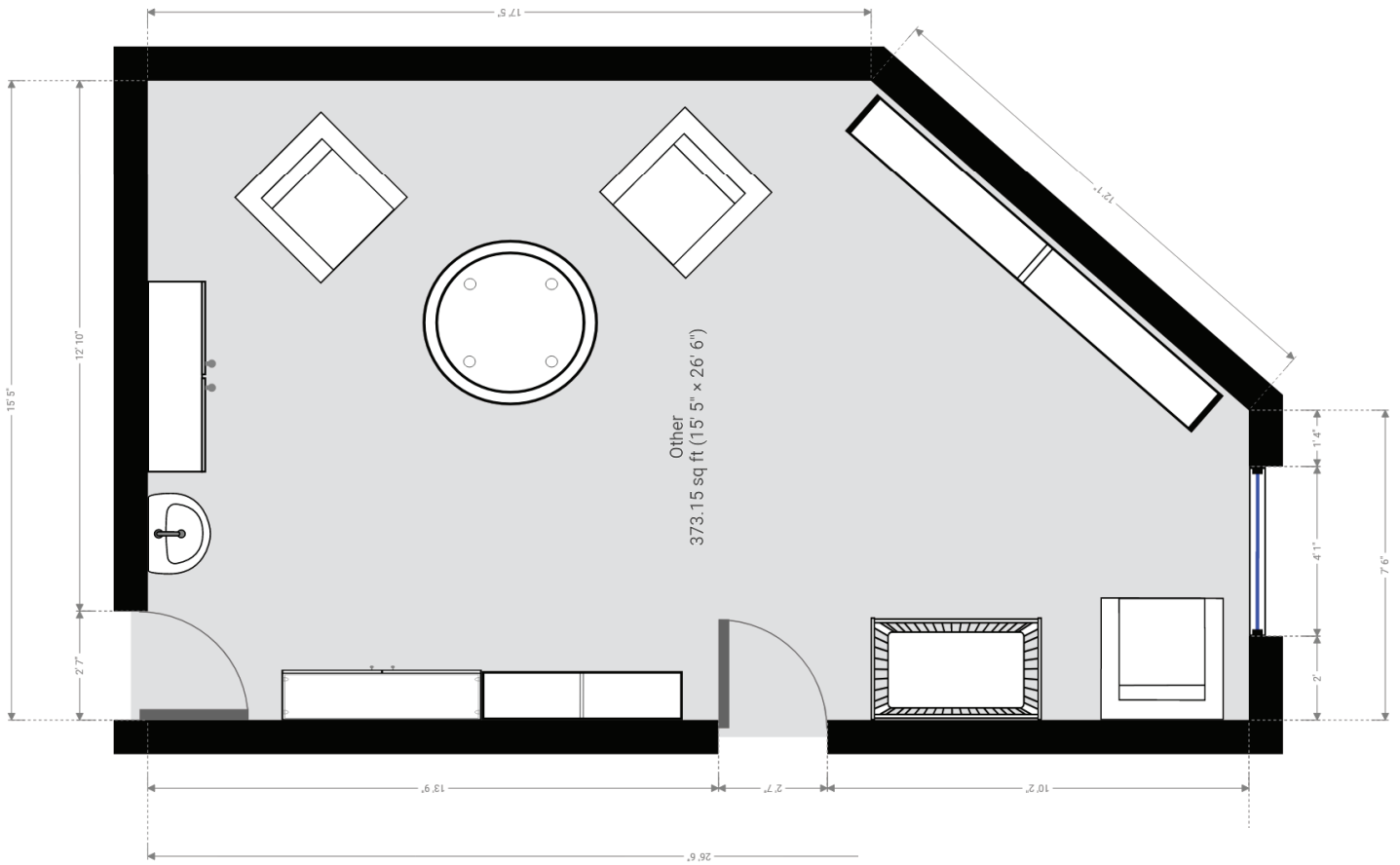
Low-relief mural



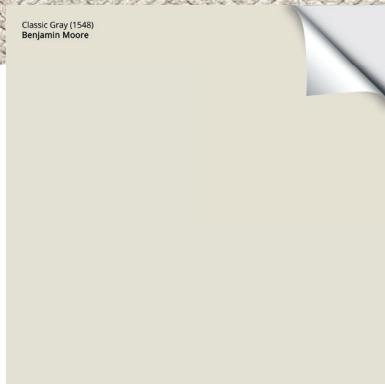
Large minimally colored mural on back wall in the same feel/look as this whale, but instead featuring a bird like these beautiful starry bird paintings.



IST DRAFT of FLOOR PLAN



Extra soft wall to wall carpet with extra thick pad.



Benjamin Moore Classic Gray for walls - it will read white but works well in rooms with less natural light.



Dutch door for entrance to nursery



Brightly colored storage for staff with high "out of reach" shelves



A fun collection of pillows throughout



Forward facing book storage for easy picture books

A few pieces of small artwork from the churches collection





Might not be feasible, but a large dappled glass circular window to let light into the nursery would be lovely. Would be installed on South wall above the storage cabinet.

Corner privacy nursing area for new moms



Ceiling mounted curtain around corner armchair for nursing mothers privacy area



Wooden pegs above diaper changing table for diaper bag storage



Cloth organizing bins



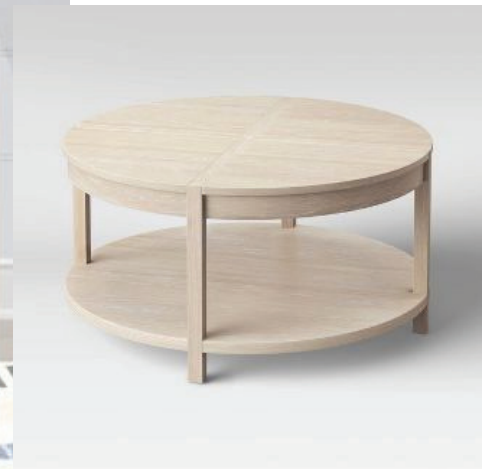
Modern style changing table with storage
(This one is from IKEA)



Montessori style storage for toys and games organized in baskets



A Pair of bright mustard rockers/gliders with arms



Round low coffee table for play and engagement

White and Wood Crib (IKEA MYLLRA or West Elm version)

NURSERY BATHROOM



Graphic pink and red print wallpaper for moment of surprise in tiny bathroom



Decorative mirror above pedestal sink, painted a primary red color to connect to bathroom wallpaper



Clean subway tiles with a touch of interest like a stripe for bathroom surround (or could do wainscoting)